

USER MANUAL

GREEN BUTTON SOFTWARE

Warning !

All rights reserved. The products named in this manual are only used for identification purposes and may be trademarks or registered trademarks of the respective companies.

Warning! Verbatim cannot be made liable for any damages, loss of data or damage following thereof -whatsoever (including, without limitation, damages for loss of business profits, business interruption, loss of business information, or other pecuniary loss) arising out of the use of or inability to use this Verbatim product, even if Verbatim has been advised of the possibility of such damages.

We reserve the right to upgrade our products in keeping with technological advances.

Introduction

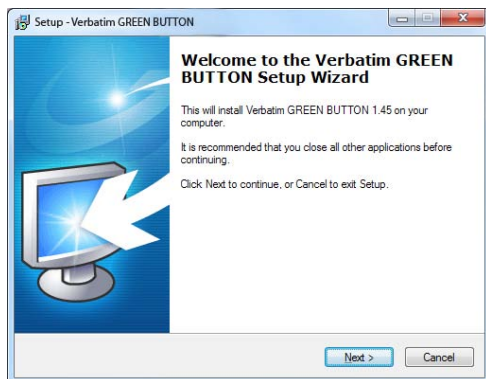
To save energy and increase lifetime of your Verbatim hard disk, the hard disk can be sent to suspend mode during idle periods.

The Verbatim GREEN BUTTON software allows activating the suspend mode and defining after what time the hard disk of your external Verbatim hard disk will be sent to suspend mode.

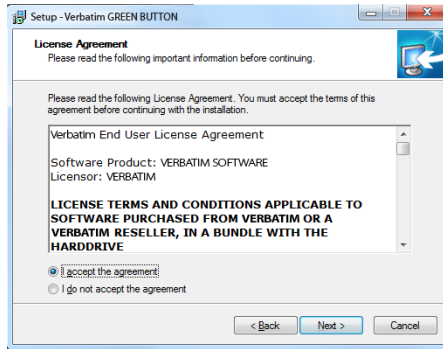
Note: When the hard disk is in suspend mode, it might take some seconds until the hard disk is resumed and accessible again!

Installation

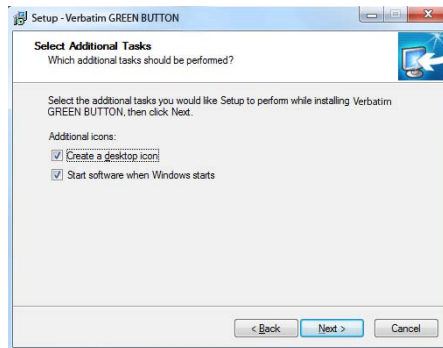
1. Run "Start PC.exe" from your Verbatim Hard Disk Drive and go to "Software Installation" -> GREEN BUTTON.



2. Click on "Next" to proceed.



3. To continue with the installation, the license agreement has to be accepted. Choose "I accept the agreement" and click on "Next". Follow the on-screen instructions to continue with the installation.



4. If "Launch Verbatim GREEN BUTTON" is enabled in the final screen, the software will be started after clicking on "Finish":



Using the software

When the software is started, it is checked whether a Verbatim hard disk is connected or not.

If no hard disk is connected, the following screen appears:



Connect a Verbatim hard disk drive to your PC and the following screen appears:



- By default the suspend time is set to 10 minutes. Move the slider to change the suspend time. When the slider is moved to the rightmost position, the hard disk will never go into suspend mode.
- When clicking on "Apply", the suspend time will be set.
- When clicking on "Close", the suspend time will be set and the software will be minimized to the tray.

Desktop Icon

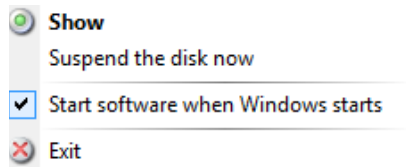
EN

Double-click on the "GREEN BUTTON" icon on your desktop: this option puts the hard drive immediately into sleep mode.



System Tray

By right-clicking on the software icon in the system tray, the following four options are available:



1. Show

The configuration dialog will be shown.

2. Suspend the disk now

This option puts the hard drive immediately into sleep mode.

3. Start software when Windows starts

When this option is selected, the software will be started during Windows startup. Uncheck this box if you don't want the software to be started automatically during Windows startup.

4. Exit

Selecting "Exit" will terminate the software.

In what situations can an external hard disk not be sent to Sleep mode?

If a software that is running in the background has access to the hard disk or is monitoring the hard disk (e.g. a backup software), it might happen that the external drive cannot be sent to Sleep mode.

For example, this can happen with the software Nero BackItUp & Burn Essentials if the AutoBackup function is activated for the external drive.

If you want to use the Green Button software in this case, the AutoBackup function has to be deactivated. To do this, right-click on the "Nero BackItUp Agent" system tray icon and select "Close Nero BackItUp Agent".